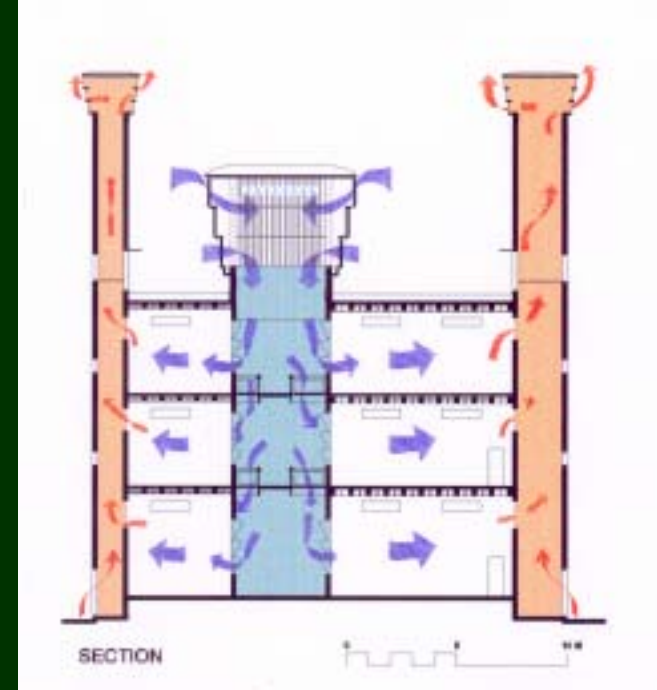


HOT SEASON STRATEGY

(MARCH – JUNE)

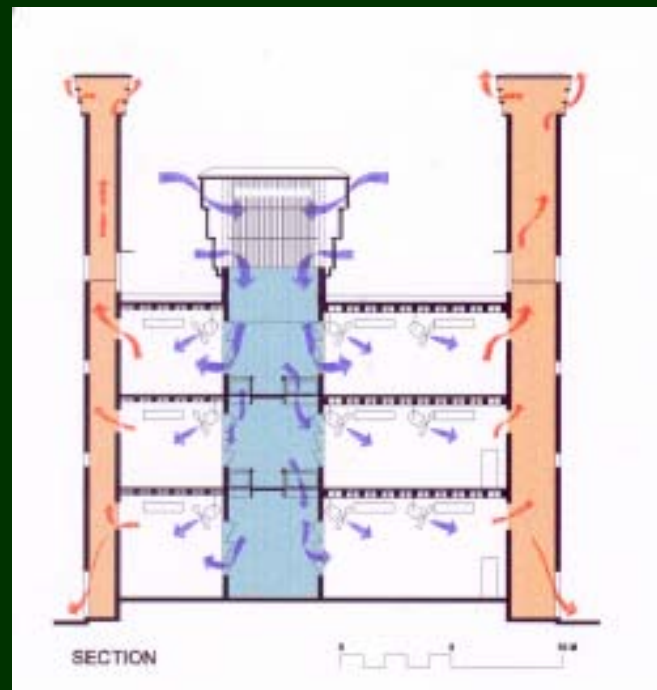
- Passive evaporative cooling
- micronisers provide a down draft of cool air.
- Night ventilation.
- Ambient temperature 41 to 43 C.
- Insulated building mass and roof.
- High air change rates achievable (8 – 15)
- Air moves across the laboratory through risk of short circuiting.
- Controls: Micronisers to be controlled automatically by reference to ambient temperature and relative humidity.



MONSOON SEASON STRATEGY

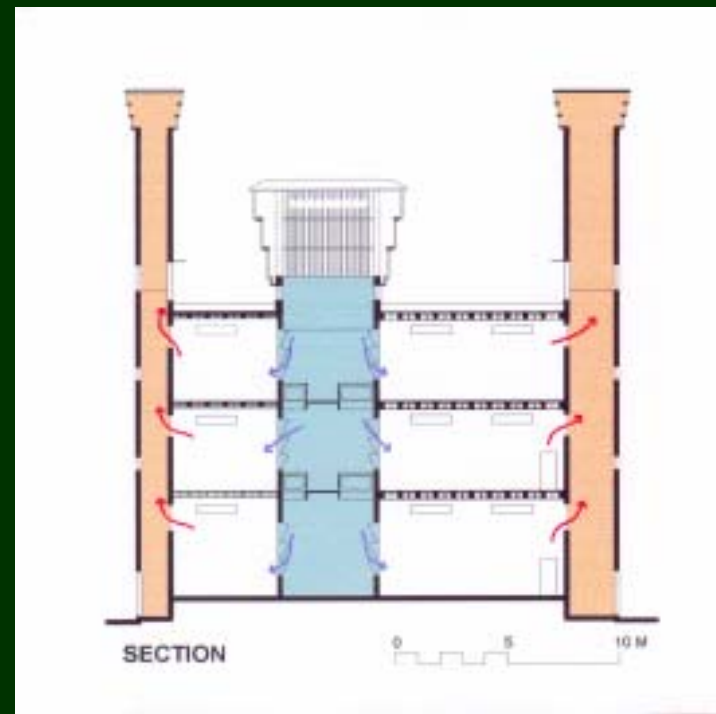
(JULY – SEPTEMBER)

- Maximise ventilation rate with micronisers switched off.
- Ceiling and wall fans to induce air movement in the same direction as natural flow.
- Air speed upper limit 1.5 Mt./Sec.
- Possibly close all exhausts in the afternoon.



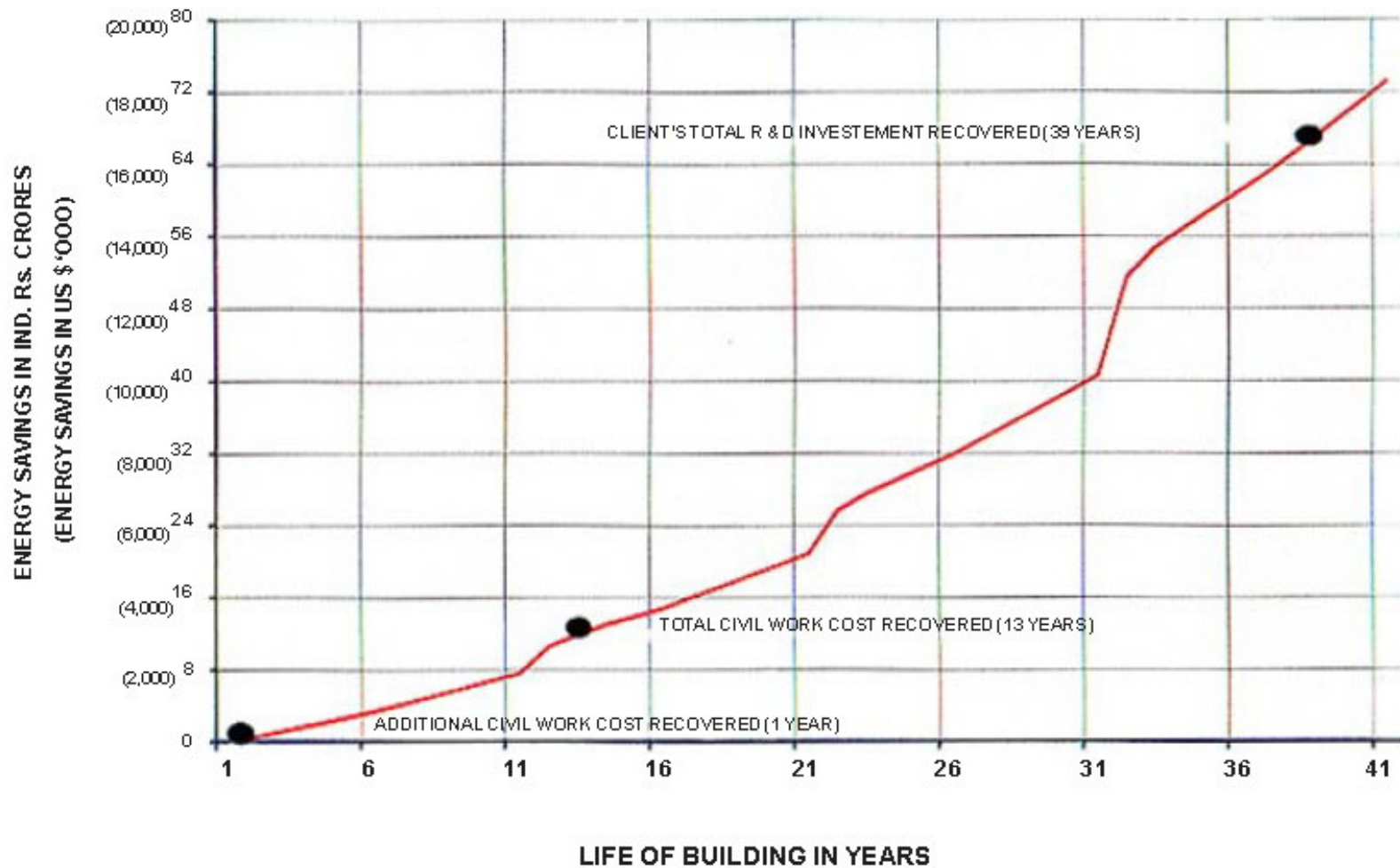
COOL SEASON STRATEGY (OCTOBER – FEBRUARY)

- Minimize ventilation rates.
- Inlets closed by shutters.
- Exhausts also closed by shutters.
- Insulated walls and roof reduces heat losses.
- Internal gains raise temperature.
- Encourage ventilation during the day (possibly evaporatively cooled on hot days).
- Close inlets and exhausts at night.



Buildings other than the typical laboratory Building no. 2, and buildings 3 and 5, which are extra-polated from Building No. 2 have been designed by Abhikram and vetted by Dr. C.L. Gupta of Solar Agni International, Pondicherry.

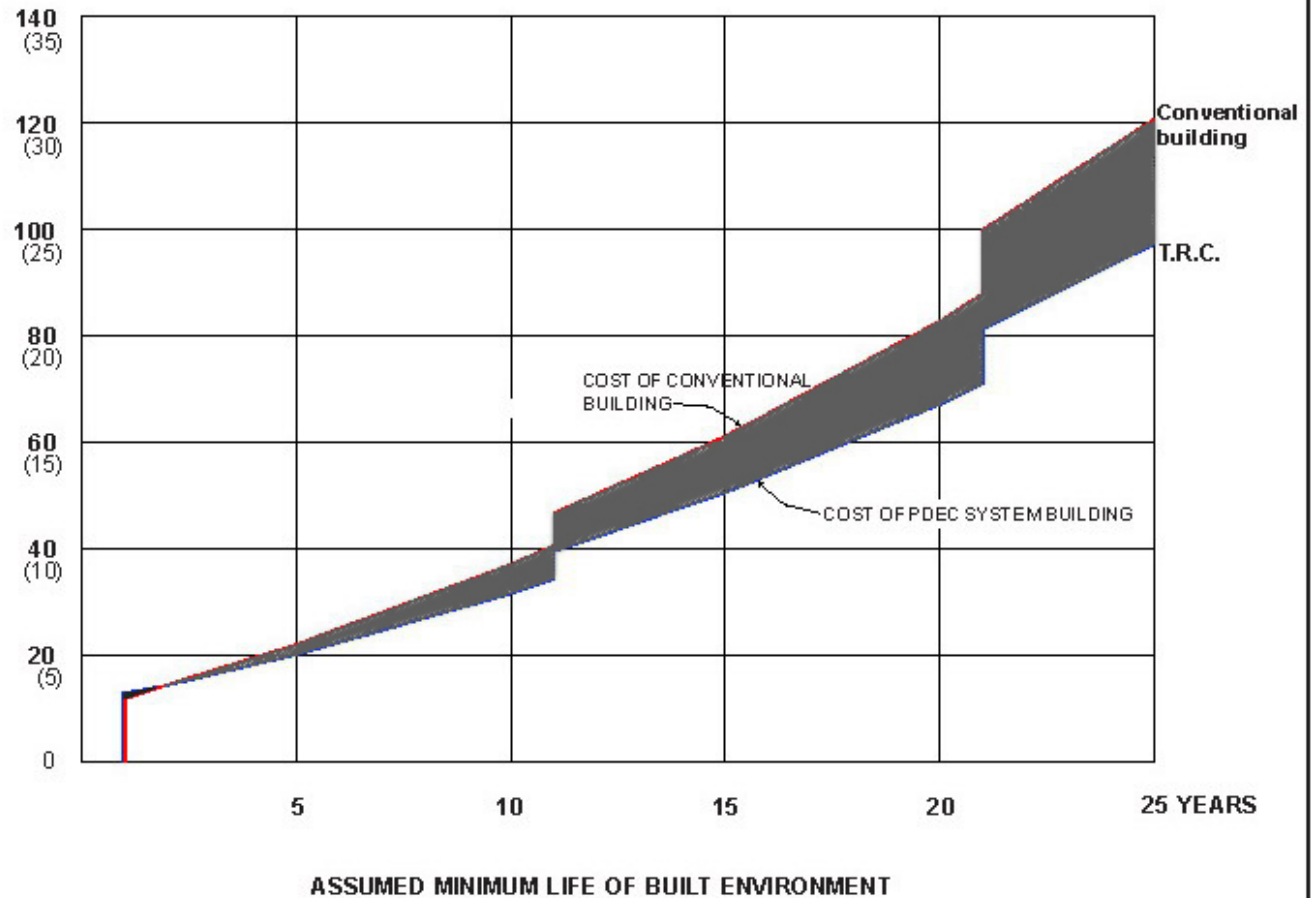
TORRENT RESEARCH CENTRE, AHMEDABAD, INDIA
AN OVERVIEW OF PAYBACK FROM SAVINGS OF ELECTRICAL ENERGY

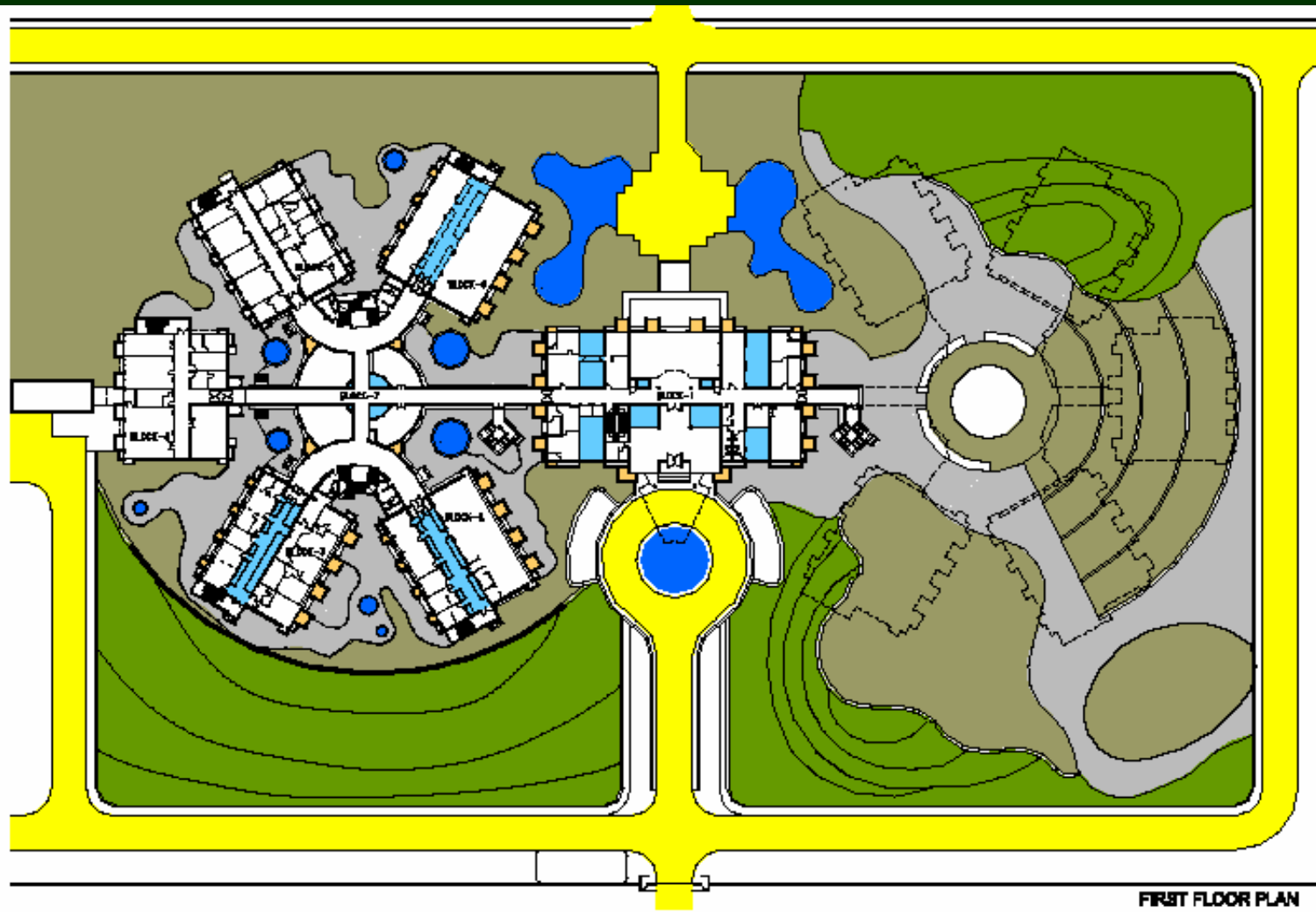


**COST OF MAINTAINING BUILDING AND HUMAN COMFORT LEVELS
A COMPARISON BETWEEN A CONVENTIONAL BUILDING AND TORRENT RESEARCH CENTRE
OVER MINIMUM LIFE OF BUILT ENVIRONMENT -25 YEARS**

**CAPITAL AND RECURRENT COSTS OF MAINTAINING THE BUILDINGS AND
THE HUMAN COMFORT LEVELS IN THE BUILDING IN Rs. CRORES**

(IN MILLION US \$)





LEGEND

- AIR INLETS
- AIR EXHAUSTS
- EXTERNAL CIRCULATION
- WATER BODIES
- LAWN
- TREE COVER / SHRUBBERY
- GRAVEL / WALKWAY
- FUTURE EXPANSION

ACTIVITIES

- BLOCK - 1
Formal Reception/ Director/Asst. Directors/
Board room/ Exhibition
- BLOCK - 2
Laboratory/Research
- BLOCK - 3
Laboratory/Research
- BLOCK - 4
Laboratory/Research
- BLOCK - 5
Laboratory/Research
- BLOCK - 6
Central Library
- BLOCK - 7
A.H.U. / Conferens / Lounge



FIRST FLOOR PLAN